



# South Milwaukee Schools



AES was retained by the South Milwaukee School District to prepare a master landscape plan—including an ecological restoration plan and a planting plan—and install all native plants for the new South Milwaukee Middle School and High School Campus.

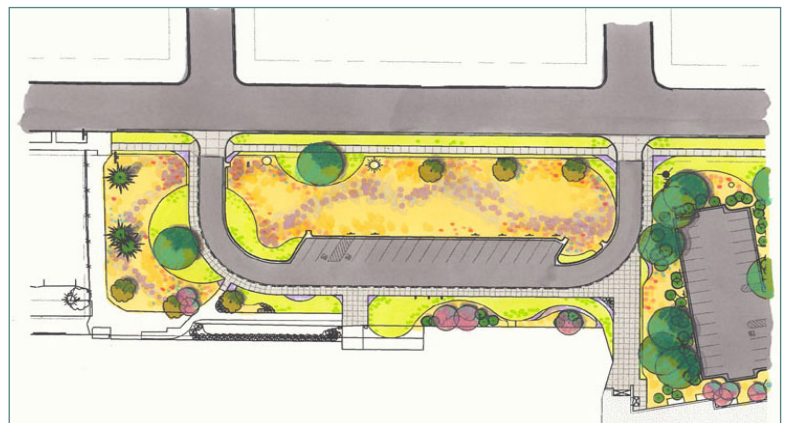
The site is unique because a state endangered perennial—bluestem goldenrod—as well as the state threatened Butler's gartersnake are known to exist at the site. These two species populations directly affected development plans for the site.

AES worked with the Wisconsin Department of Natural Resources and the school district to develop a Stormwater Treatment Train™ stormwater

management system and restoration plans for the site as well as the adjacent Rawson Woods, a high-quality woodland.

The design team at AES worked to develop a highly detailed planting plan that would compliment the new architecture of the school building while providing an aesthetically pleasing landscape interest throughout the year. AES' Ecological Contracting Division completed all of the installation and continues to maintain natural areas and formal landscapes.

Client: South Milwaukee School District  
Contact: Jeff Siegman, Buildings and Grounds Manager  
(414) 766-5020  
Project Type: Master Planning / Ecological Restoration & Maintenance  
Location: South Milwaukee, WI  
Project Size: 6 acres  
Timeline: 2003–2014



Detailed landscape rendering